

FULLY AUTOCLAVABLE

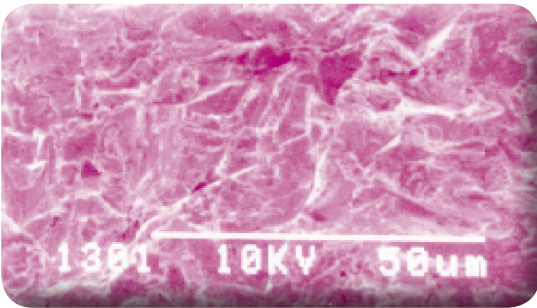
MicroEtcher II™

Intraoral Sandblaster



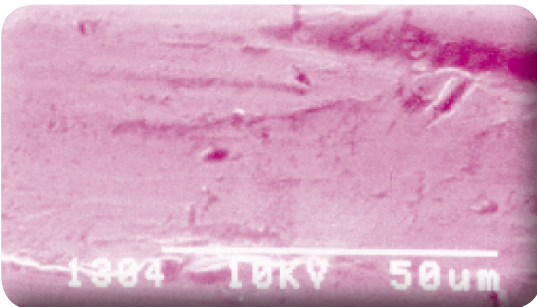
Sand Blasted Dental Alloy

800x



Bur Roughened Dental Alloy

800x

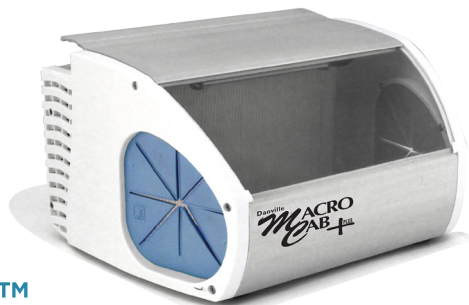


Chairside bonding changed forever when we introduced the original Microetcher Intraoral Sandblaster. Precision microroughening with our new Microetcher II improves bond strength up to 400%. By increasing the surface area and simultaneously activating the surface, all mechanical bonding procedures are improved.

- Precise control for intraoral use.
- Rapid bonding prep with failures greatly reduced.
- Ideal for orthodontic and other appliances.

Along with the ERC'S patented rear mounted abrasive jar and pinch valve for a longer life in abrasive environments, the Microetcher II features an innovative rotatable, removable and autoclavable nozzle. Six choices of angles and nozzle sizes are available. The newly patented nozzle assembly can be rotated 360° and is removable for autoclaving or interchanging.

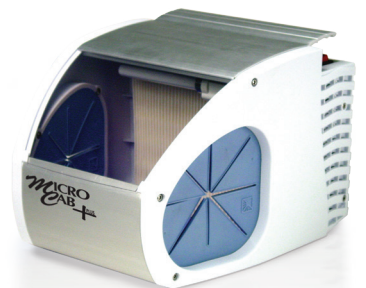
Sandblasting is fast and easy with most surface roughening procedures requiring only a few seconds. The precision of the abrasive stream makes the Microetcher II as controllable as a handpiece. It's perfect for minor Class I and V, pit and fissure and sealant preps.



MacroCab+™

Self Contained Dust Collection System

- New LED lights with 30,000 hour life that save energy!
- A 50% higher flow fan for better suction power!
- New window design for a better fit - less powder leakage!
- Universal power supply 100-240, 50-60 Hz with UL, CE and TUV approvals



MicroCab+™

Self Contained Dust Collection System

- Effectively contains dust and debris from etching or cleaning process
- Bright, fluorescent light
- Quiet filter and fan
- Small footprint
- Wall mountable

ORDERING INFORMATION

INCREASE BOND STRENGTH UP TO 400% WITH THE MICROETCHER IIA, II AND ERC

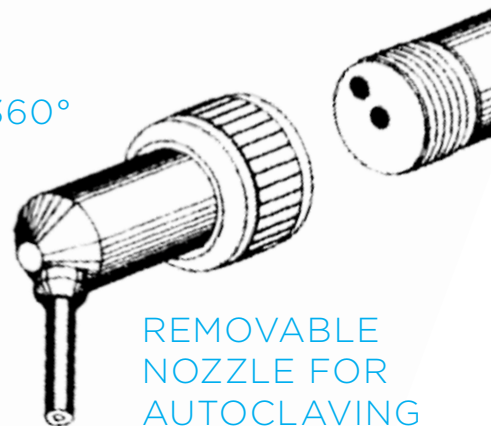
ROTATES 360°

TYPICAL SURFACE ROUGHENING APPLICATIONS INCLUDE:

- Crown cementation with maximum bonding and fast, easy cleaning for recementation.
- Intraoral porcelain and composite repair. Porcelain veneer bonding prep.
- Pit and fissure prep and removal of incipient decay.
- Amalgam bonding. Enamel bond enhancement. Acrylic facing replacement.
- Posts, inlays and onlays prep; occlusal adjustments.
- Metal crowns to check for precise fit and occlusion.
- Prepare attachments for Maryland bridges.
- Clean and prepare orthodontic brackets, bands.
- Relining and repair of metal dentures.



*Pit & Fissure Preps.



REMOVABLE
NOZZLE FOR
AUTOCLAVING

- Precise, reliable abrasive stream, finger button controlled
- .048" or .032" tips are available, plus four different nozzle angle options

MICROETCHERS & ACCESSORIES

22005-01 MICROETCHER II KIT

Microetcher II, 60° Nozzle, 9Ft. Air Line, Two Abrasive Jars, Sample Abrasive and Instructions. Minimum Pressure of 45 PSI (2.5 Bar) Air Supply Is Required.

NOZKIT

186113

NOZZLE KIT

(Specify 3 of .048 Tip Options)
60° with .032 Tip

TIP

21000-03 Microetcher ERC

ABRASIVES

ALUMINUM OXIDE

15301	50 Micron, 1 Lb	White
15201	90 Micron, 1 Lb	Tan
16101	Glass Beads 90 Micron, 1 Lb	
14001	Orthoprophyl SA-85 85 Micron	

THE SAND-TRAP

22006 Package (15)

CONSULT OUR PRICE SHEET
FOR PRICING AND ADDITIONAL
PRODUCT LISTINGS