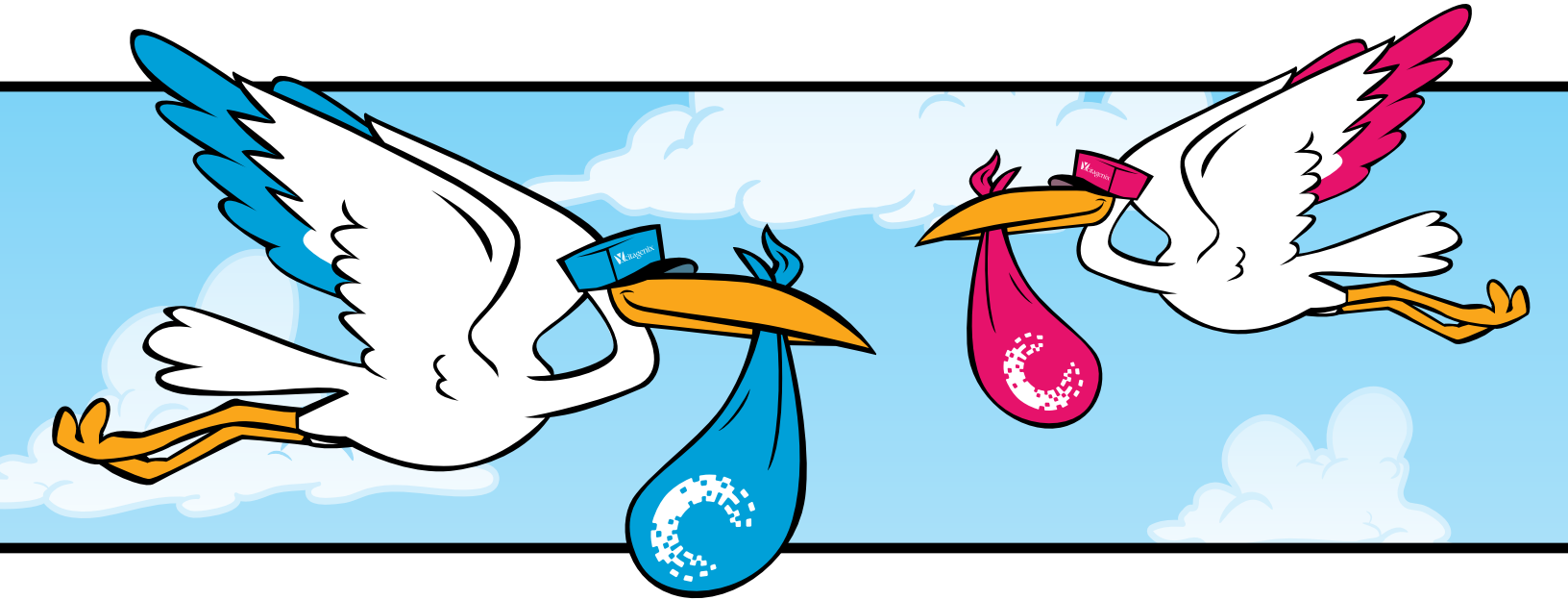


# The Twins are here!



## **C-Graft Putty™**

Demineralized Bone Matrix



**c-graft™**

## **C-Blast Putty™**

Demineralized Bone Matrix with Cancellous Bone



**c-blast™**



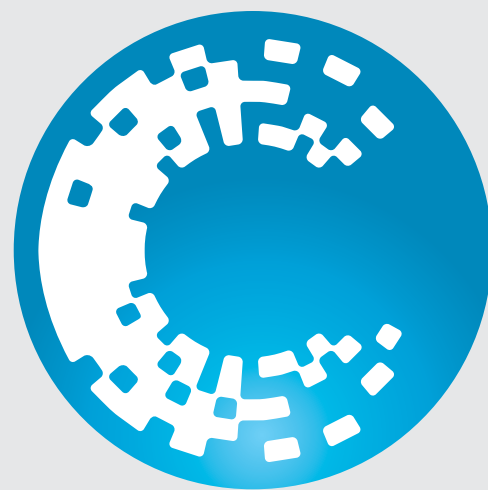
CMC



DBM



Cat No.	Size
CG-P03	0.3cc
CG-P05	0.5cc
CG-P10	1cc
CG-P30	3cc



**c-graft<sup>TM</sup>** PUTTY

**Demineralized Bone Matrix**  
+ CMC



- Quality products
- Excellent handling
- Great pricing
- Ready to use



**c-blast<sup>TM</sup>** PUTTY

**Demineralized Bone Matrix**  
+ *Cancellous Bone* + *CMC*



- Room temperature storage
- Open bore syringes
- E-beam sterilization
- Double sealed blister packaging



DBM



CMC



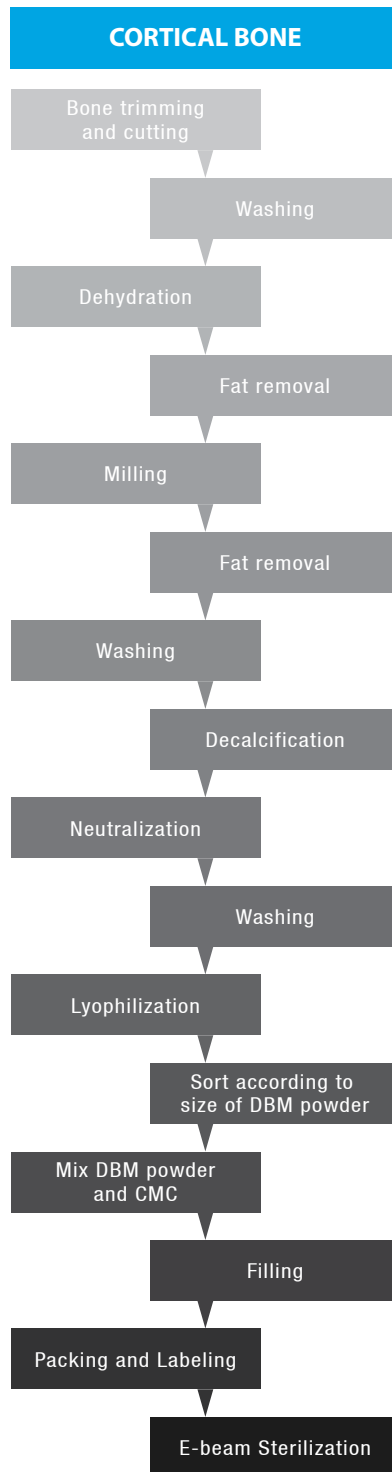
Cancellous



Cat No.	Size
CB-P03	0.3cc
CB-P05	0.5cc
CB-P10	1cc
CB-P30	3cc

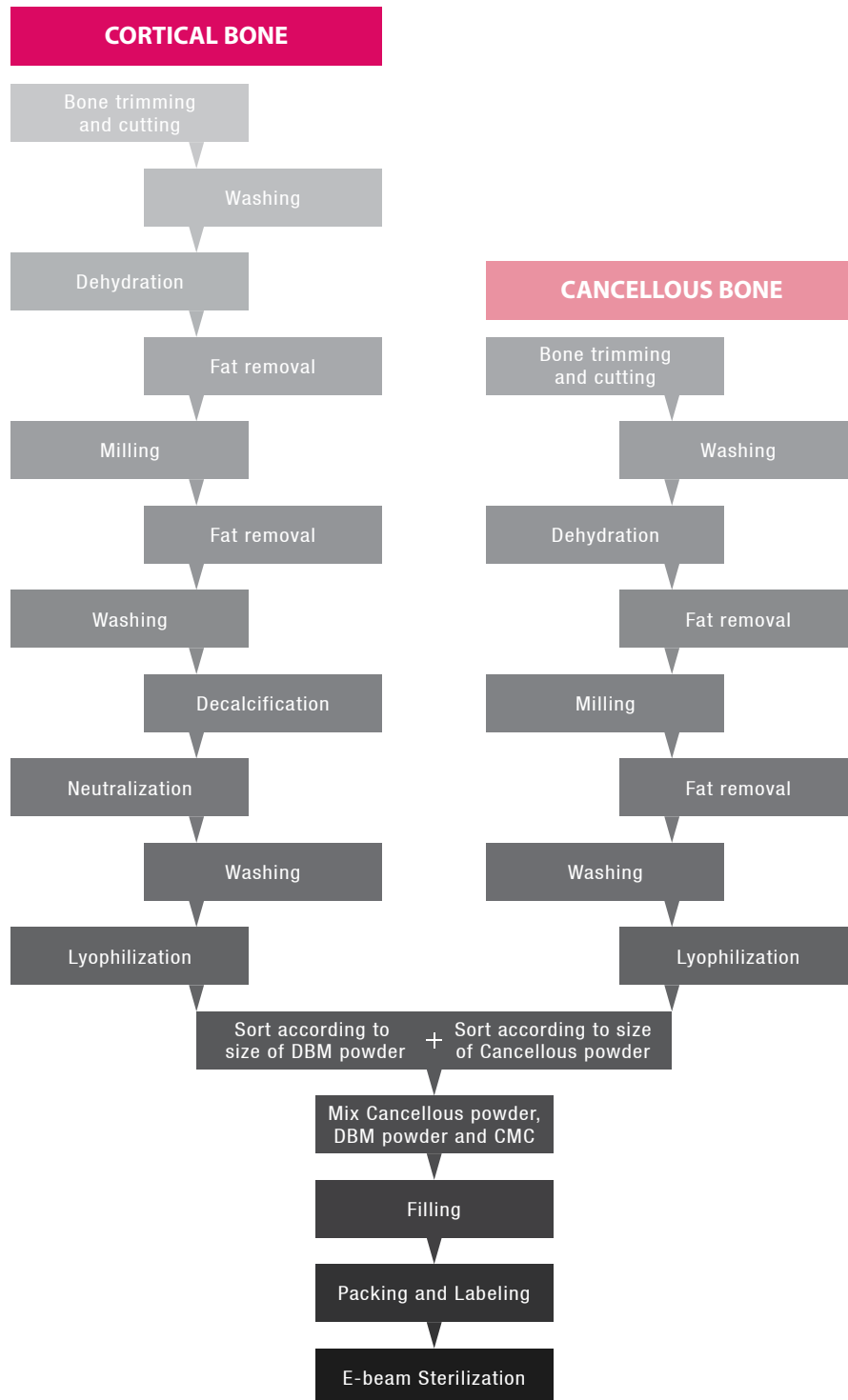
## MANUFACTURE PROCEDURE (MANUFACTURING FLOW DIAGRAM)

The diagram of C-Graft Putty manufacture procedure



## MANUFACTURE PROCEDURE (MANUFACTURING FLOW DIAGRAM)

The diagram of C-Blast Putty manufacture procedure





# *Natural Plant Derived Carrier*

## *Carboxymethylcellulose (CMC)*

*A polysaccharide hydrogel derived from linters of the cotton seed*

- *Commonly used in food, cosmetics and pharmaceutical preparations*
- *Excellent biocompatibility – does not interfere with cell mediated bone formation*
- *Odourless, tasteless and nontoxic*
- *High viscosity physiologically inert carrier which maintains its interface at the graft site*
- *Malleable - can be molded and placed into any shaped defect*
- *Excellent dimensional stability – does not significantly shrink nor expand*
- *Will not migrate from the graft site*
- *Resorbs slowly in harmony with new bone formation allowing for cellular and vascular infiltration*
- *Haemostatic effect when grafted into a bleeding site*
- *FDA classifies CMC as GRAS (generally regarded as safe)*





A woman in a white lab coat is holding a flask containing a blue liquid. She is looking up at the flask with a focused expression. In the background, a man wearing safety glasses is partially visible, looking on. The scene is set in a laboratory with various glassware and equipment visible. The lighting is bright, creating a professional and scientific atmosphere.

# *Dental Clinical Cases*

*(Demineralized Bone Matrix)*



# Ridge Split with Implants



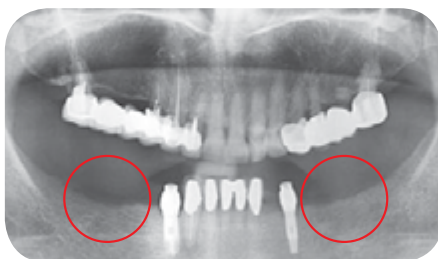
**Ridge Split & Grafting using C-Graft Putty™**

This patient was complaining of pain when wearing lower dentures. The previous treatment plan had partial dentures anchored by single implants using ERA attachments due to cost. The new treatment plan included multiple implants and ridge split with grafting due to resorption. C-Graft Putty was used.

## User's opinion

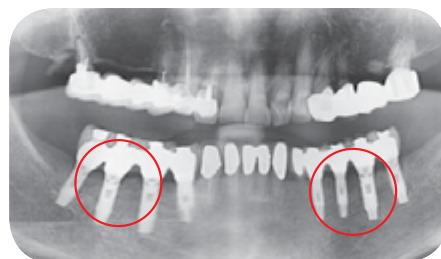
- The ease of placement of C-Graft Putty™ in this bilateral ridge split case is a real advantage.

Pre-op radiograph



Partials with ERA attachments have been in function for a long period of time. Dentures have loosened and bone has resorbed.

Post-op radiograph



Bone is well formed around implants in ridge split





# Sinus Elevation



Using the lateral approach allows for ease of graft placement.

## User's opinion

- The putty format of C-Graft Putty™ handles well as it is more viscous than the gel format.

Pre-op radiograph



Sinus elevation will be conducted

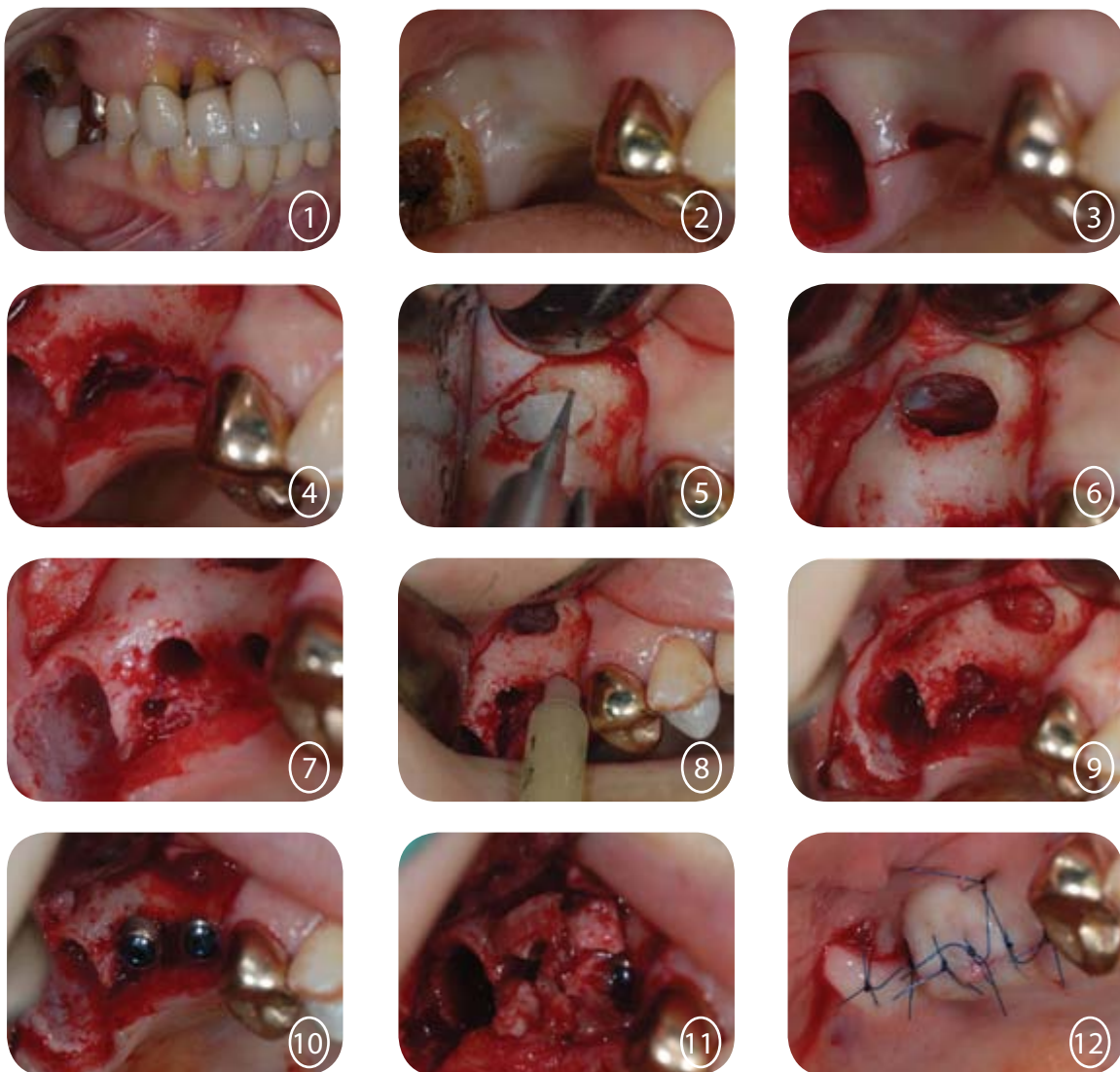
Post-op radiograph



Bone is well formed around the implants



# Sinus Elevation



## User's opinion

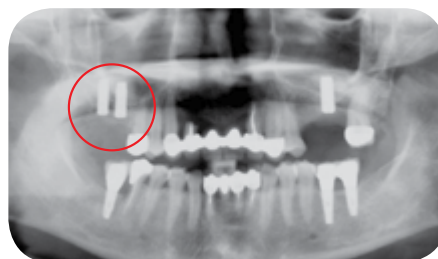
- The syringe allows the graft to be placed directly. The C-Blast Putty graft material did not migrate after placement.

Pre-op radiograph



Sinus Elevation will be conducted

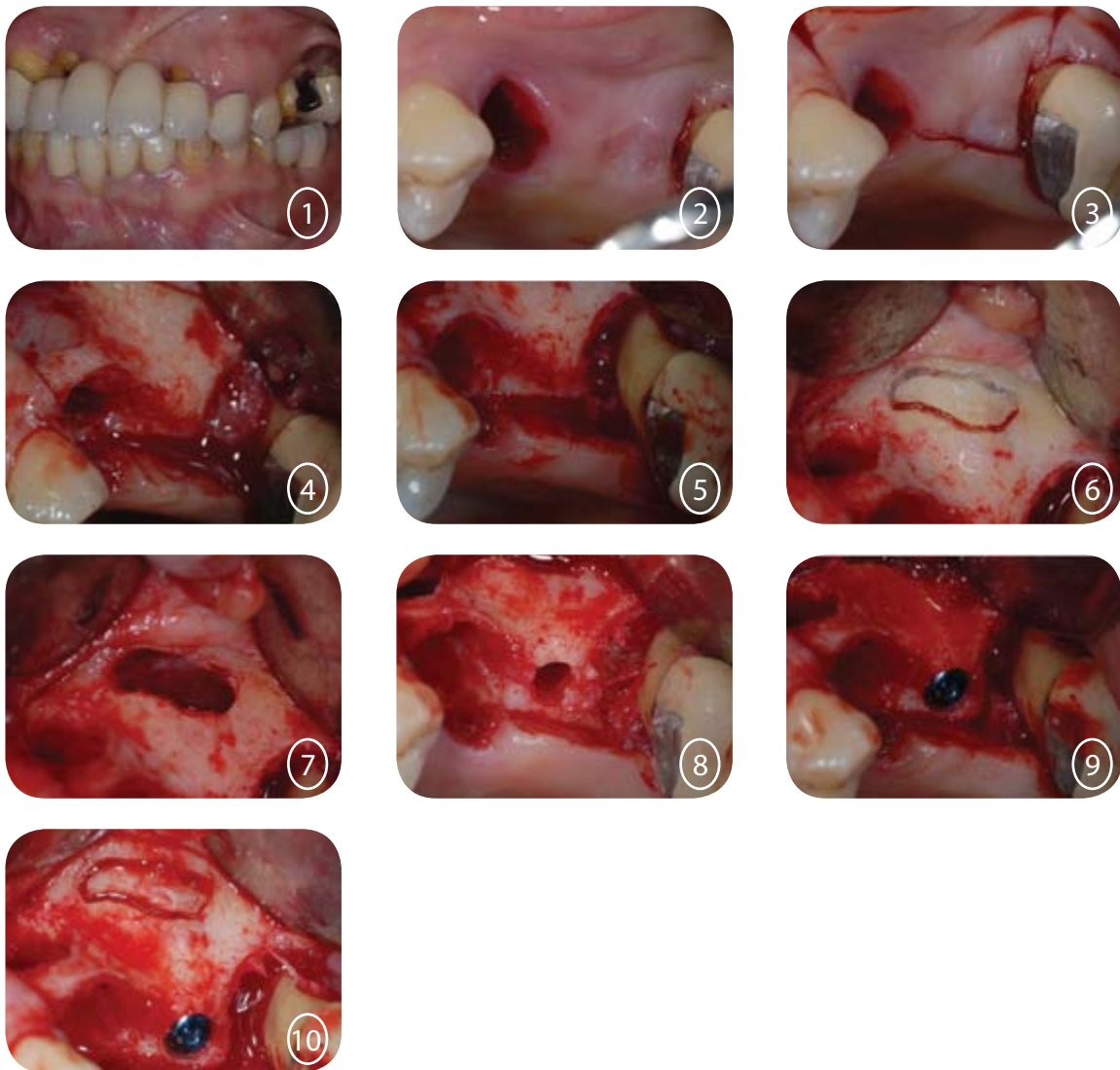
Post-op radiograph



Bone is well formed  
around the implants



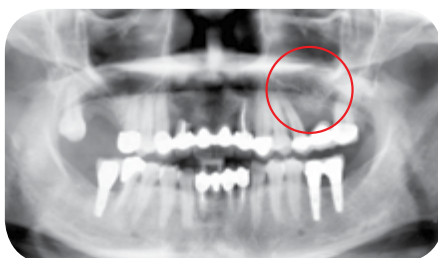
# Sinus Elevation



## User's opinion

- C-Blast Putty is useful with immediate implant placement after extraction when there is a lack of alveolar bone

Pre-op radiograph



Sinus Elevation will be conducted

Post-op radiograph



Bone is well formed  
around the implant



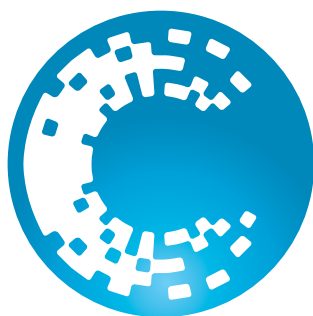


- ✈ Quality product
- ✈ Excellent handling
- ✈ Great pricing

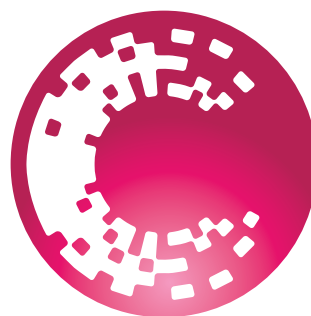


Available syringe sizes:

**0.3 cc • 0.5 cc • 1 cc • 3 cc**



**c-graft**™  
PUTTY



**c-blast**™  
PUTTY

# CITAGENIX

The Regen Company

To place your order call your local product specialist or call us at:  
+1 450-688-2564 • 1 877-243-6724 (North-America only) • [info@citagenix.com](mailto:info@citagenix.com) • [Citagenix.com](http://Citagenix.com)