

CYTOFLEX®

TI-ENFORCED®

Titanium Reinforced ePTFE Membrane

“Cytoflex® Ti-Enforced® is the best PTFE membrane in the market.
It has predictable outcomes and has changed my practice.”
– Dr. Samuel Lee, San Diego, CA - 500+ Cytoflex® Ti-Enforced® membranes

C05-0101
13 x 20mm

Perio
for periodontal
defects



C05-1301
20 x 25mm

Posterior Single
for posterior
extraction sites



C05-0301
12 x 24mm

Anterior Narrow
for narrow
single-tooth
extraction sites



C05-1501
20 x 25
x 36mm

**Posterior Single
Winged**
for posterior
extraction sites



C05-0501
14 x 24mm

Anterior Single
for single-tooth
extraction sites



C05-1701
25 x 30mm

Posterior Large
for large bony
defects



C05-0701
18 x 29mm

**Large Anterior
Single**
for large
single-tooth
extraction sites



C05-1901
25 x 30
x 41mm

**Posterior Large
Winged**
for large bony
defects



C05-0901
19 x 26mm

Buccal
for buccal
defects



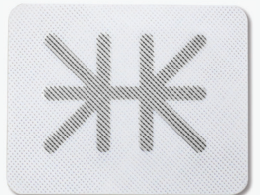
C05-1101
27 x 29mm

Large Buccal
for large
buccal defects



C05-4101
32 x 40mm

Extra Large
for very large
bony defects



More sizes available – see our website for details

CYTOFLEX®

TI-ENFORCED®

Titanium Reinforced ePTFE Membrane

Cytoflex® Ti-Enforced® is a passive, non-load bearing membrane with a titanium frame enclosed within two layers of ePTFE material. The titanium frame enhances space and shape maintenance of graft material during the bone regeneration process. The space-making membrane is intended for the treatment of periodontal defects and alveolar ridge augmentation according to the guided tissue regeneration principle. It is to be submerged and implanted for more than 30 days and up to 6 months.

The Cytoflex® Ti-Enforced® membrane can be easily conformed to the graft site, and the titanium frame does not delaminate with simple trimming.



Advantages

Thin and soft

Easily conformable

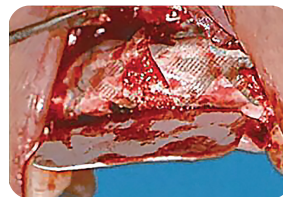
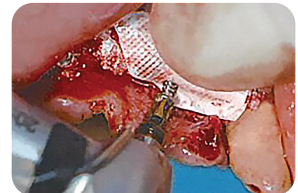
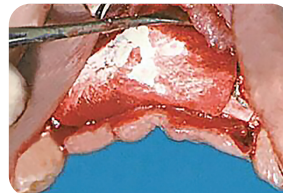
Textured on both surfaces

Case 1



Two 32mm x 40mm
Ti-Enforced® membranes
placed

Case 2



Two 30mm x 41mm Ti-Enforced® membranes placed