

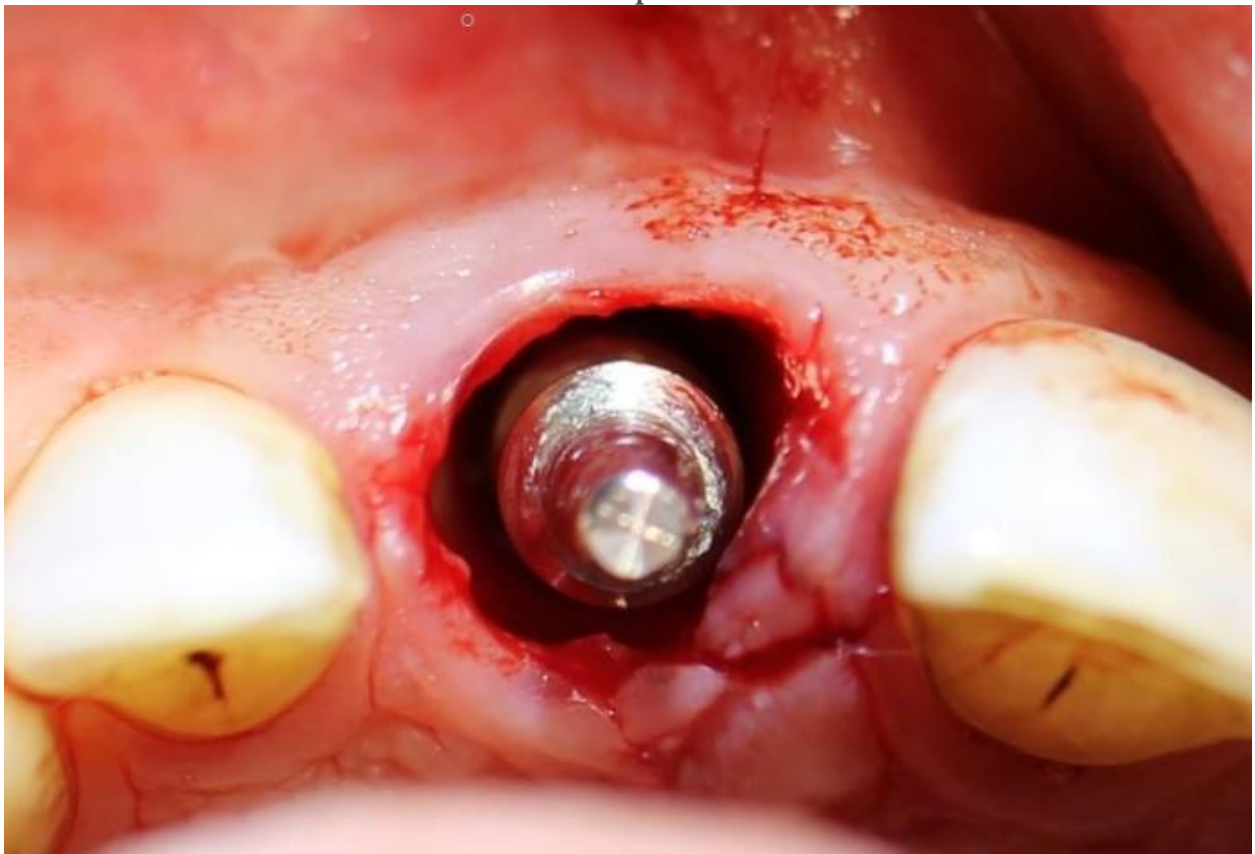
Immediate Implant Grafting with Immediate Graft™



#8 failing restoration



Pre op #8



#8 extracted with implant; temporary and healing abutment placed



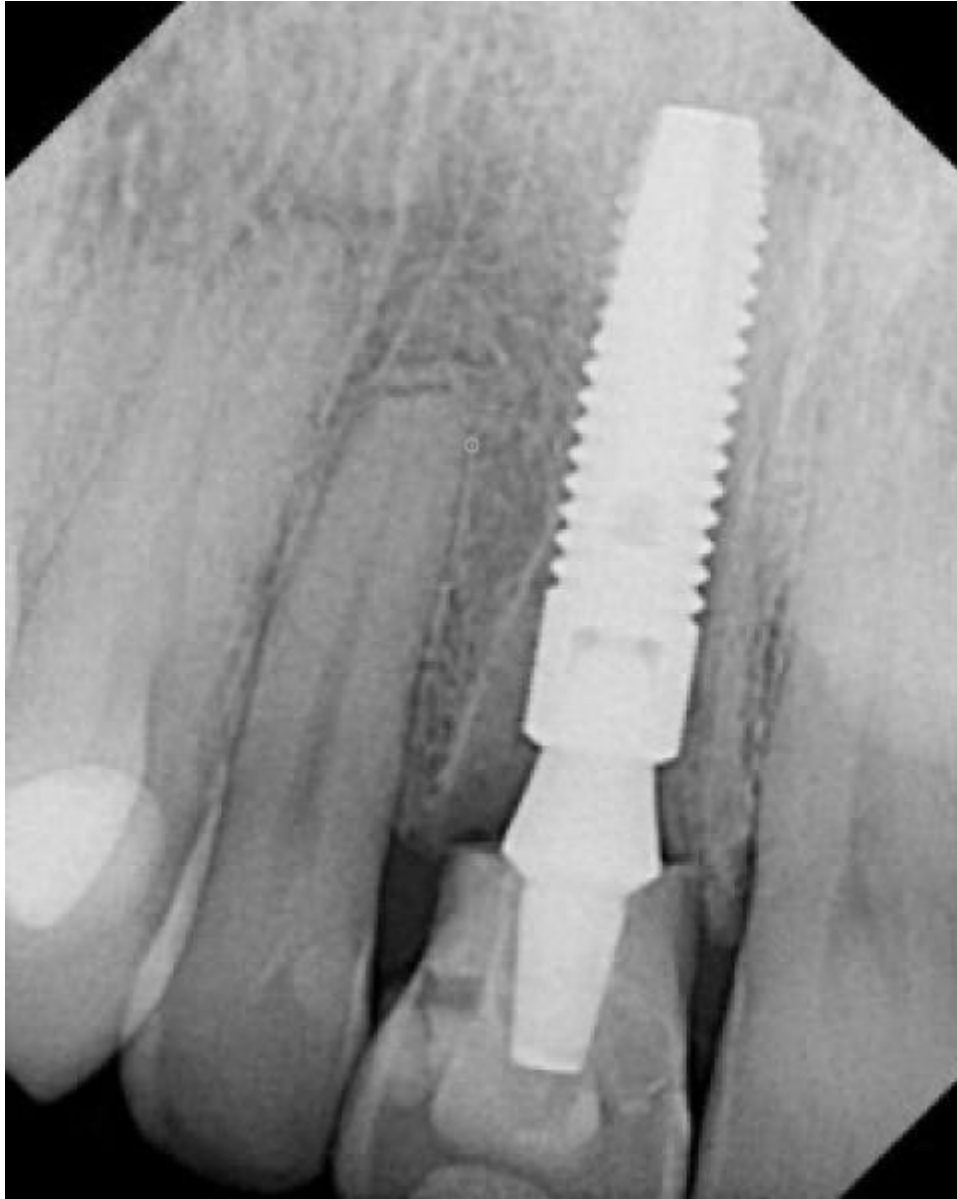
Grafted with [Immediate Graft™](#)



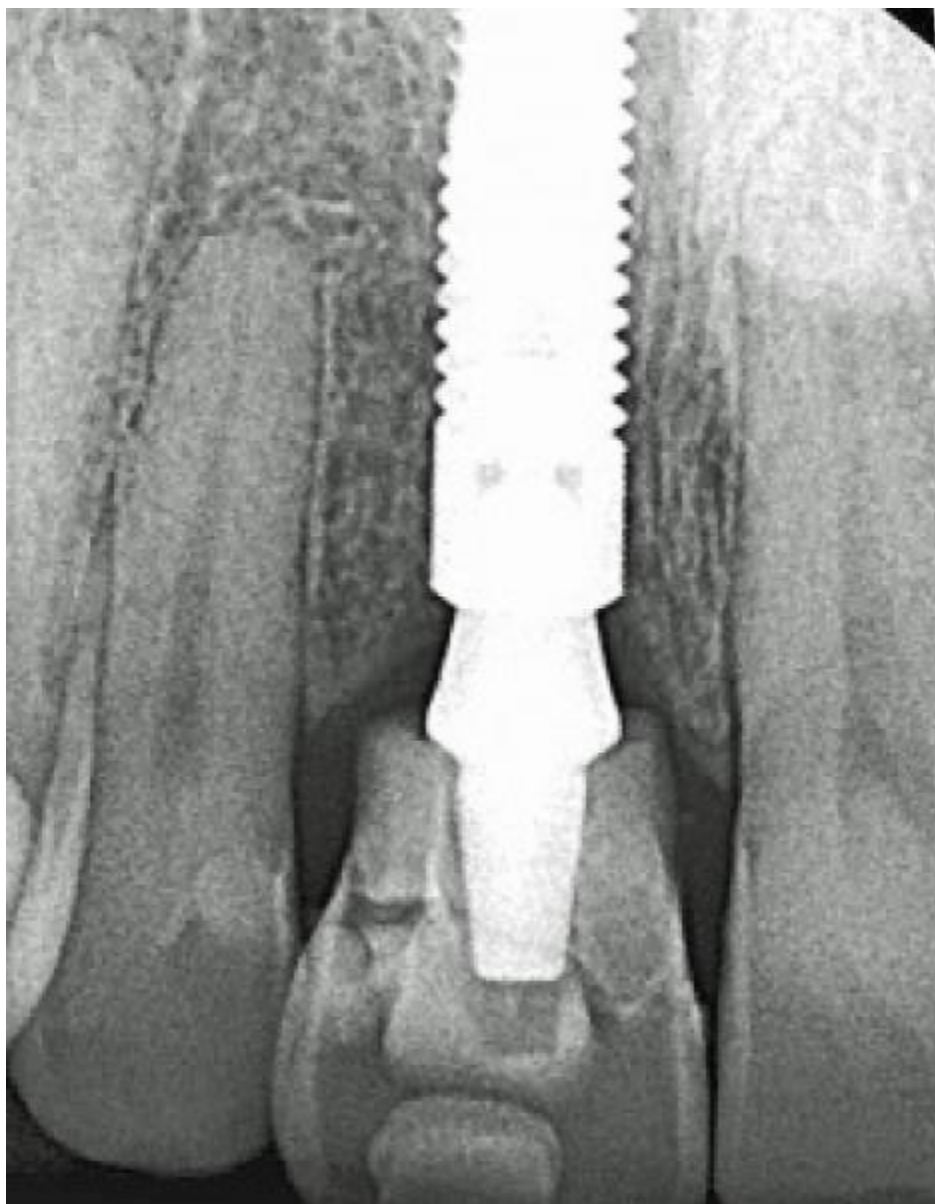
Original crown used as temporary
It is important that the temporary crown seal the gingiva to protect
the graft and stimulate the gingiva.



#8 failing restoration



Day of Surgery



Day of Impression