



**NEW BONE  
NEW LIFE**



**DENTAL**  
NATURAL BONE SUBSTITUTE



# Concept of customized Bonegraft material



## Sticky Bone without Blood Collection!

### Bovine Bone Mineral

Unable to mold  
Lack of retentivity

Scattered & Flowing

Blood collection to make  
sticky bone

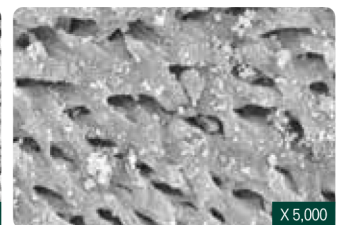
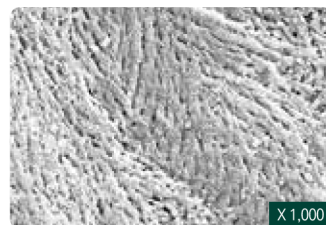


Moldable & Customizing

Customized build up

Sticky bone made easily  
with saline or blood

## BOVINE BONEGRAFT



### S1 has similar structural characteristics with human bones

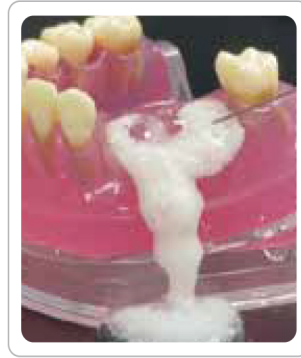
Due to its high porosity, S1 provides the most optimal environment for promoting osteoblast adhesion, blood vessel formation, and bone regeneration.

# NEW BONE NEW LIFE

## Keywords



S1 (Bovine Bone)



Bovine Bone Mineral

- 1 Excellent adhesion and fixation
- 1 Rigid Space Maintenance
- 1 Excellent osteoconduction

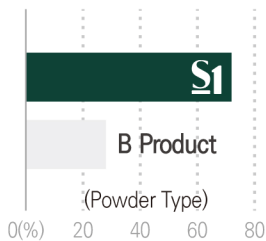


S1 (Bovine Bone)

- 1 Easy to manipulate
- 1 Various indications

1

## High porosity



### Porosimeter Test

- Percentage of porosity is more than 70%
- High porosity allows rapid penetration of growth factors

1

## Improved Hydrophilicity

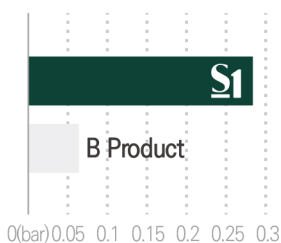


### Hydrophilicity Test

- Porous structure makes blood circulation easily

1

## Excellent shape maintenance

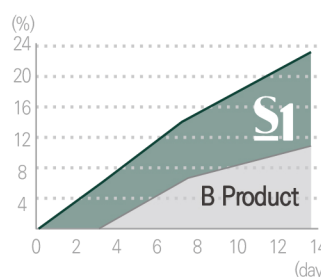


### Pressure Test

- Perfect shape maintenance against high pressure from outside compared to other bone

1

## Bone formation rate



### Mass Increase Test

- High attachment rate of ions to S1
- 21% increase in mass after 14days due to high adhesive rate of ions

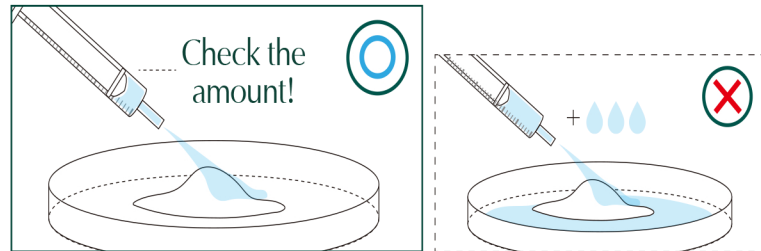
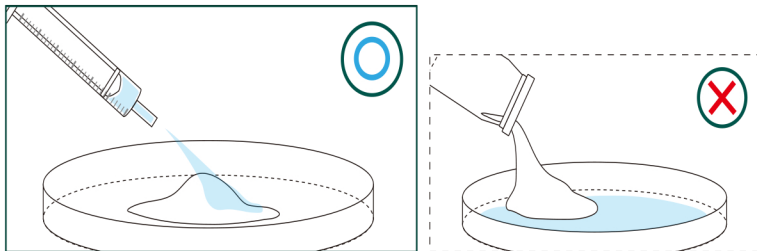
# Quick Guide

✓ Please apply the liquid as indicated

✓ Do not mix with other bonegraft

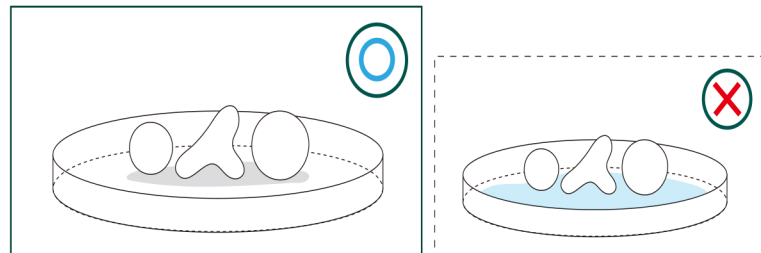
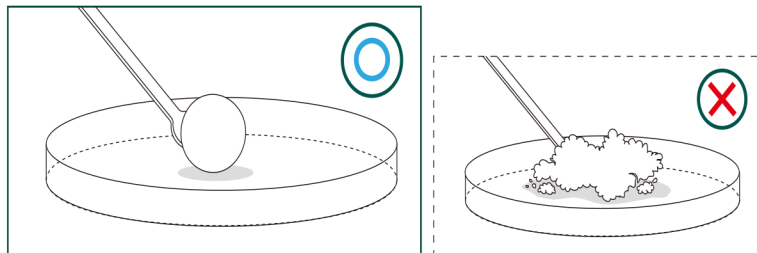
✓ Each package is for one-time use only

✓ Mix with solutions well enough



1 Place S1 in the tray and hydrate the materials with saline

1 Please use the recommended amount of saline only.



1 Knead the dough enough for at least 30 seconds by using hands or tools to form a lumpy shape before using S1.

1 Do not soak in saline after shaping for a surgery

## Recommended Amount of Saline

TYPE	PARTICLE SIZE	WEIGHT	SOLUTION AMOUNT
Powder	0.2~1.0 mm	0.15 g	0.2 cc
		0.25 g	0.35 cc
		0.5 g	0.7 cc
		1.0 g	1.4 cc
		2.0 g	2.8 cc

TYPE	PARTICLE SIZE	WEIGHT	SOLUTION AMOUNT
Chip	1.0~2.0 mm	0.25 g	0.45 cc
		0.5 g	0.9 cc
		1.0 g	1.8 cc
		2.0 g	3.6 cc

\* Ordermade : Medium Type (0.5~1.4 mm)



# Innovative technology

## Check it out for yourself !



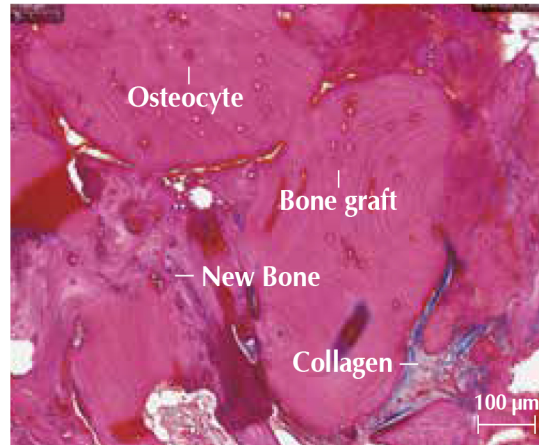
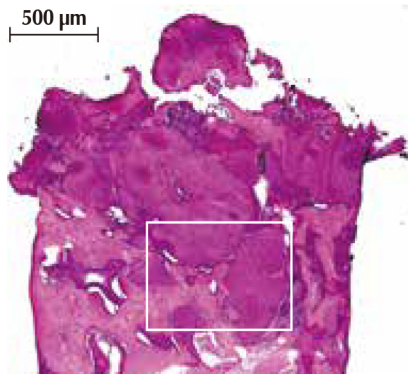
Watch the clinical uses on our Youtube

### Biopsy

※ Hematoxylin & Eosin Stain

#### Case 1 | #14, Ridge augmentation

Patient Info : 65 years-old, female

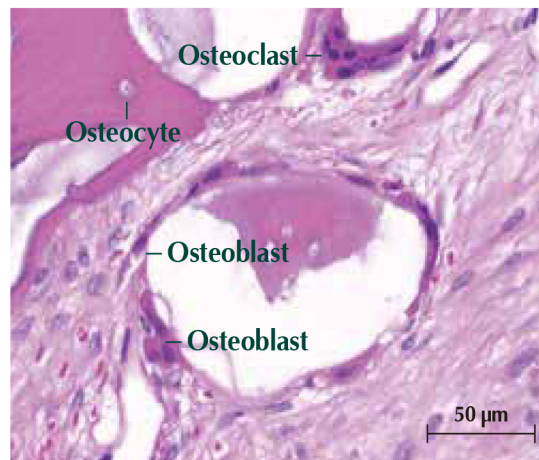
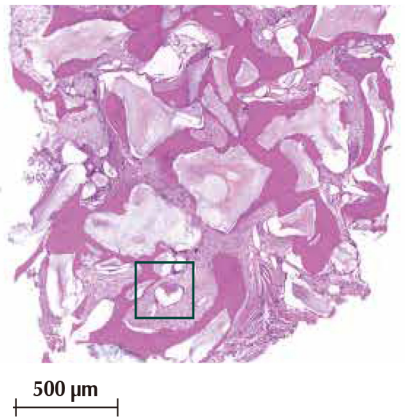


#### Clinical Opinion

- Excellent bone formation around bone graft material
- The graft materials appeared surrounded by newly formed bone
- No sign of inflammation or immune rejections

#### Case 2 | #26, Sinus graft

Patient Info : 73 years-old, female



#### Clinical Opinion

- Excellent osteoconduction as it shows osteoclasts and new bone formation
- No evidence of inflammation or immune rejection

### Clinical cases

#### Case 1

Patient Info : 59 years-old, female, Ridge augmentation



Before surgery



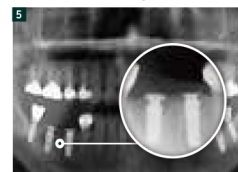
Placing Fixture



Grafting S1



Suture



After grafting S1



Final prosthesis

#### Case 2

Patient Info : 66 years-old, Male, Ridge augmentation



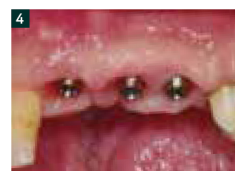
Before surgery



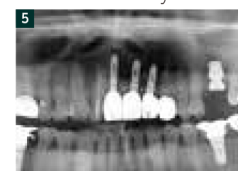
Dehiscence defect and widespread bone defects



Grafting S1



4 months after grafting S1



Postoperative x-ray, after 4 month



Final prosthesis

# MedPark



**DENTAL IMPLANT**  
TECHNOLOGIES

DIT-USA.COM  
(800) 452-0582  
SALES@DIT-USA.COM